

Hale 'Iako

OFFICE SPACE FOR LEASE



consider your future here at HOST Park ...

features

- security, parking and mailboxes
- business planning services
- co-working space
- state-of-the-art conference room
- air-conditioned by deep seawater
- outdoor lanai and ocean views
- outdoor demonstration space
- base rent: \$2.39 - \$2.74/sq. ft.
- no CAM charges
- access to latest HOST Park news
- free wi-fi available
- shared kitchen amenities

This renovated 15,000 sq. ft. building includes an oceanview conference room and a large collaborative space with outdoor move-in ready space for small-scale technology demonstrations.

This makes it the perfect place for businesses to innovate, collaborate and demonstrate their technologies.

Take your business to the next level.
Consider your future here at HOST Park.



Natural Energy Laboratory of Hawaii Authority

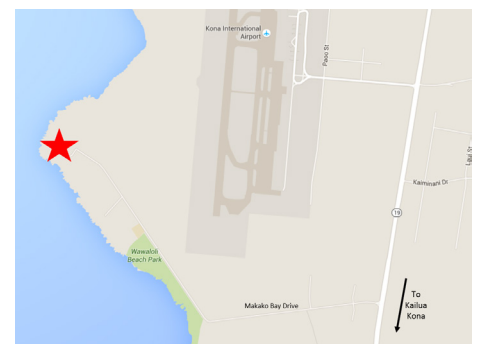
73-4460 Queen Ka'ahumanu Hwy. #138

Kailua-Kona, HI 96740

(808) 327-9585

leasing@NELHA.org

nelha.hawaii.gov

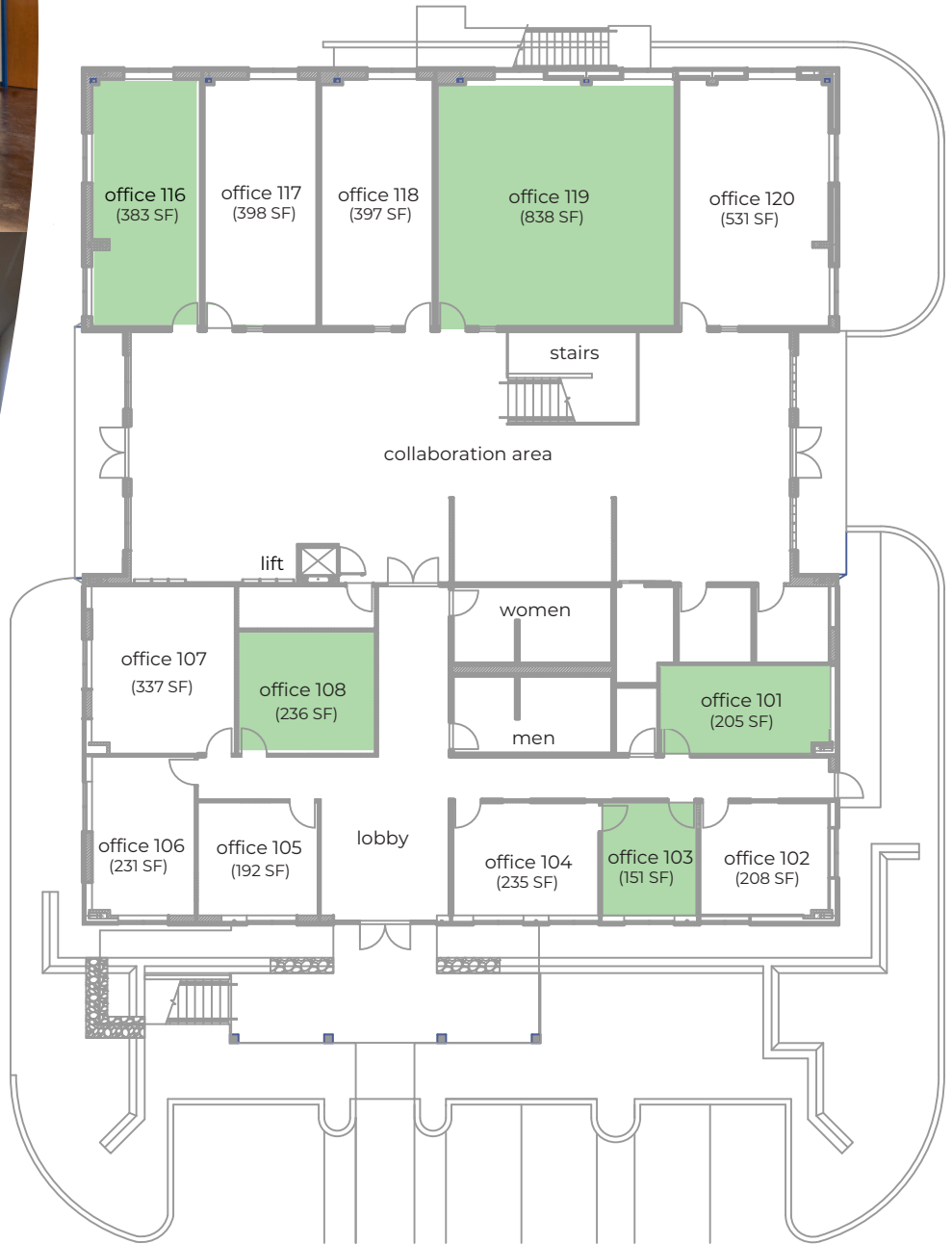


Hale 'Iako

OFFICE SPACE FOR LEASE

1st floor

available space in green*



* as of July 2025

office #103 available after July 31, 2025



Natural Energy Laboratory of Hawaii Authority

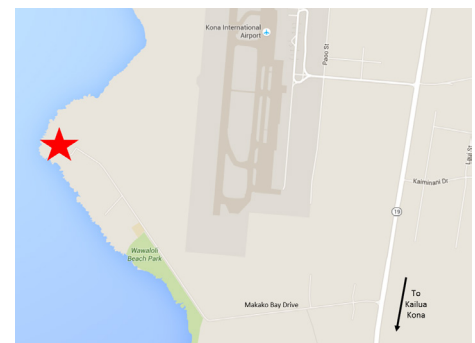
73-4460 Queen Ka'ahumanu Hwy. #138

Kailua-Kona, HI 96740

(808) 327-9585

leasing@NELHA.org

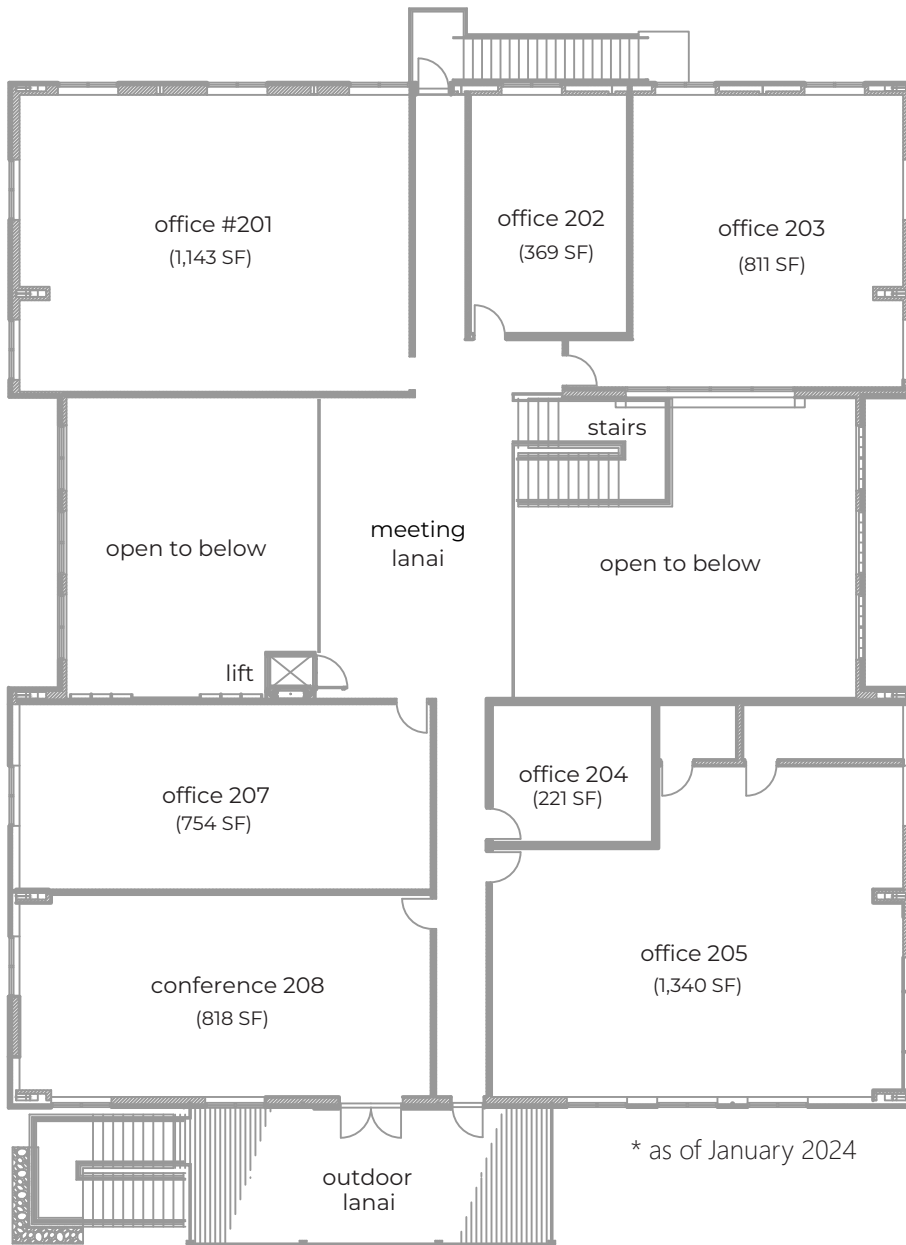
nelha.hawaii.gov



Hale 'Iako

OFFICE SPACE FOR LEASE

2nd floor
no availability*



Natural Energy Laboratory of Hawaii Authority
73-4460 Queen Ka'ahumanu Hwy. #138
Kailua-Kona, HI 96740
(808) 327-9585
leasing@NELHA.org
nelha.hawaii.gov

