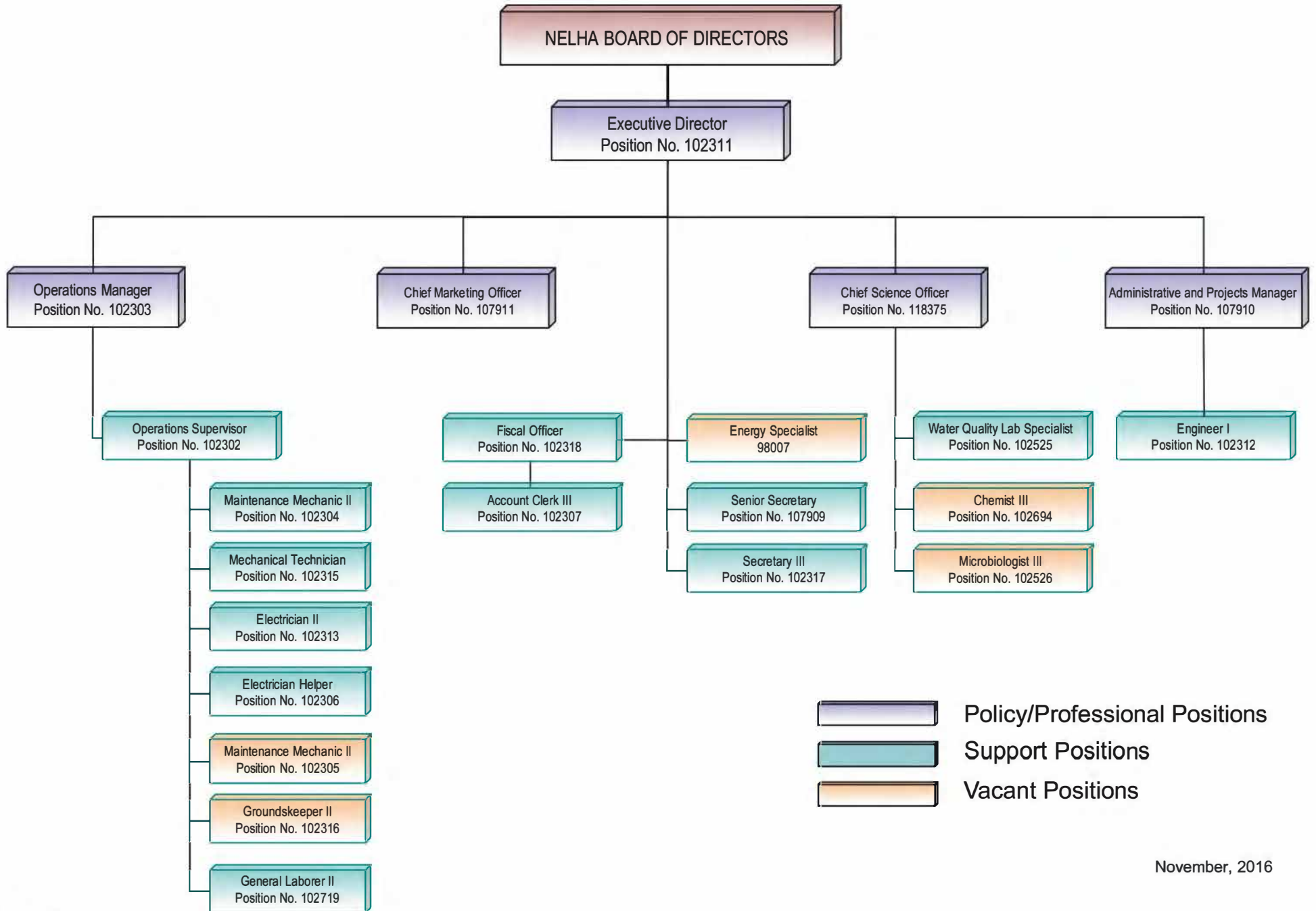


NATURAL ENERGY LABORATORY OF HAWAII AUTHORITY

ORGANIZATIONAL CHART - 2018



NELHA Employees as of August 31, 2018

POSITION TITLE	INCUMBENT
NELHA Executive Director	Barbour, Gregory
NELHA Senior Secretary	Appleby, Karen
NELHA Engineer	Babbitt, Bryan
NELHA General Laborer II	Debina, Chad
NELHA Secretary III	Espinueva, Georgette
NELHA Maintenance Mechanic I	Gibo Jr., Celestino
NELHA Business Manager	Vacant
NELHA Admin & Projects Manager	Leonard, Alexander
NELHA Water Quality Specialist	Madden, Pamela
NELHA Accounting Clerk III	Miranda, Jerrae
NELHA Maintenance Mechanic I	Mitchell, Anthony
NELHA Chief Science Officer	Olson, Keith
NELHA Electrician II	Thompson, Allon
NELHA Utility Electrician	Pierce, Thomas
NELHA Chief Marketing Officer	Sombardier, Laurence
NELHA Operations Manager II	War, Jan